

MV 150 Series



Application

- Decoration of supply and exhaust vents of public, residential and industrial ventilation systems.
- Used for correct air flow distribution in premises.
- Wall or ceiling mounting.

Design

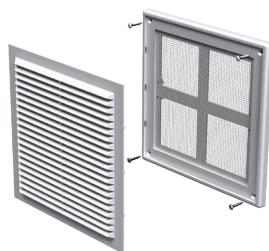
- Made of quality and durable plastic.
- Multi-element structure. The internal part is fixed to the base with latches for easy cleaning without dismantling.
- Fixing with screws or lugs depending on grille modification.

Colour modifications



Modifications

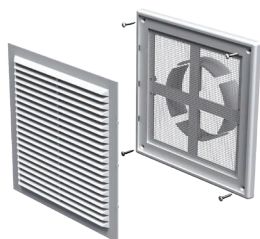
MV 150 – basic modification



- Screw fixing.
- **MV 150 s** – model with a protecting insect screen and screw fixing.
- **MV 150 M** – model with fixing lugs.
- **MV 150 Ms** – model with fixing lugs and a protecting insect screen.



MV 150 VD – model with four-element connecting flange



- Screw fixing.
- Equipped with four-element connecting flange with adjustable diameter for connection to \varnothing 100-150 mm round air duct.
- **MV 150 VDs** – model with four-element connecting flange, screw fixing and a protecting insect screen.
- **MV 150 VDM** – model with four-element connecting flange and fixing lugs.
- **MV 150 VDMs** – model with four-element connecting flange, fixing lugs and a protecting insect screen.



Overall dimensions

Model	Dimensions, [mm]					Air pass, [m ²]	Fig. no
	B	H	L	L1	D		
MV 150	204	179	16	–	–	0.0092	1, 2
MV 150 VD	204	179	16	41	100-150	0.0092	1, 3

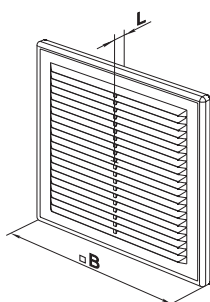


Fig. 1

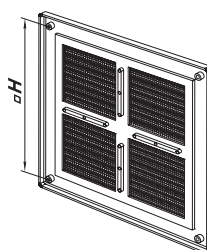


Fig. 2

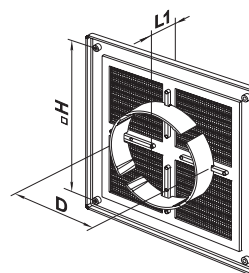


Fig. 3