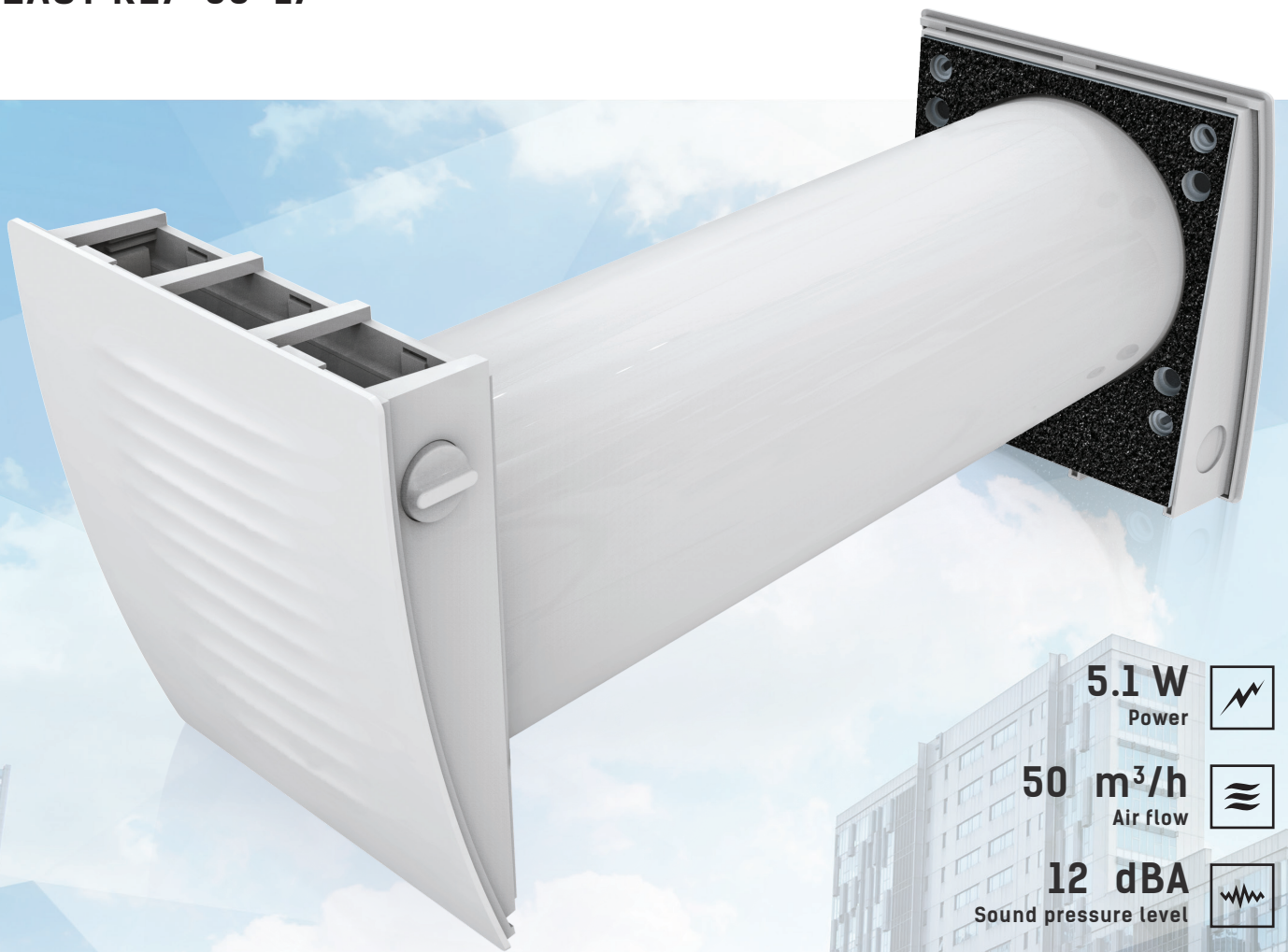


SINGLE-ROOM HEAT REGENERATION UNIT

EASY RL7-50-17



5.1 W
Power 

50 m³/h
Air flow 

12 dBA
Sound pressure level 

EFFICIENT, RELIABLE AND ENERGY SAVING VENTILATORS 24/7:



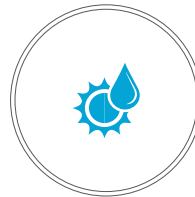
Provide fresh air supply



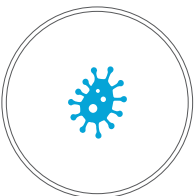
Consume little energy



Extract stale air from the room



Maintain heat regeneration and indoor humidity balance



Prevent excessive indoor humidity and mould build-up



Reduce heating and air conditioning costs



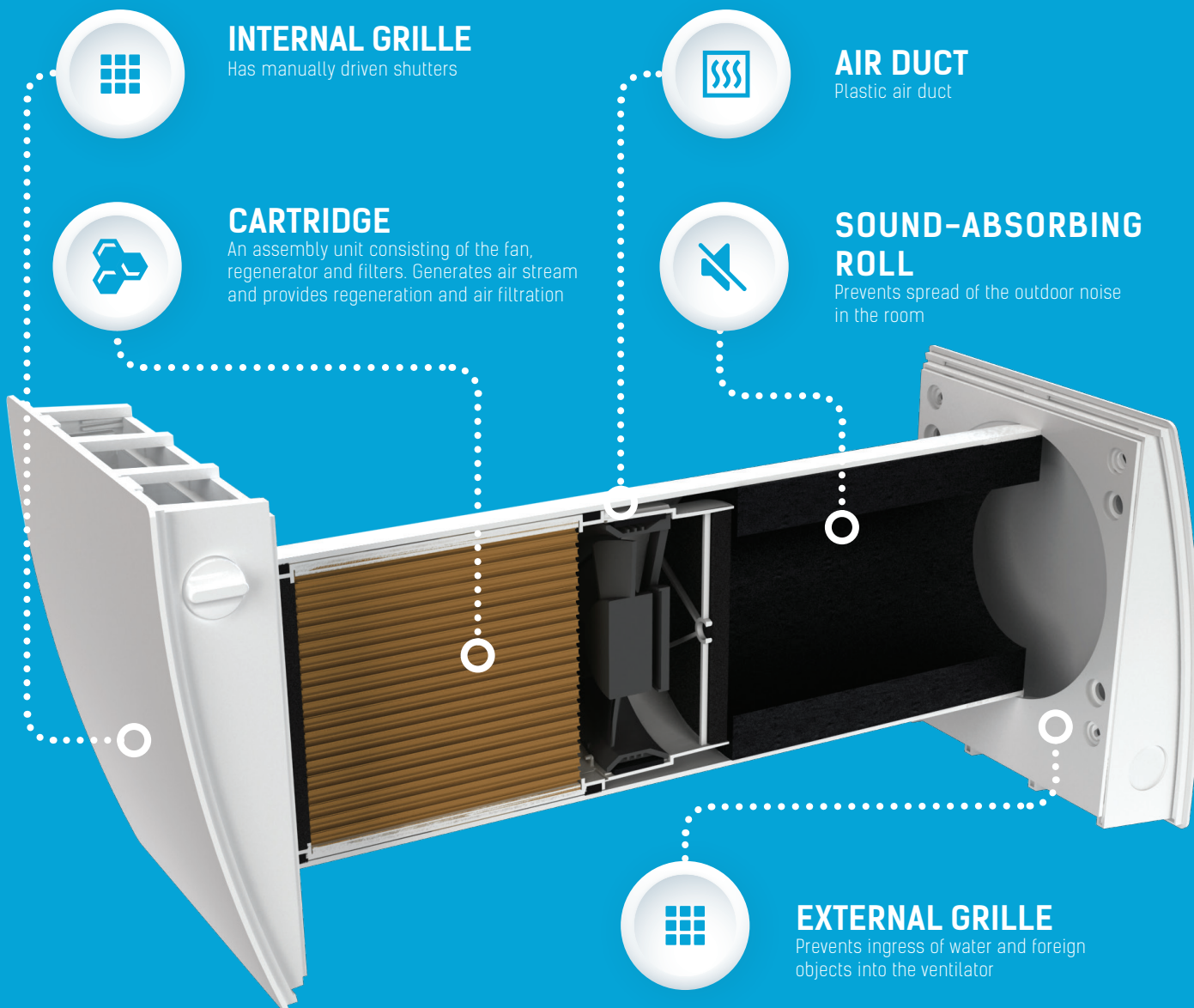
Attenuate indoor noise



Clean air of dust and insects



VENTILATOR DESIGN



INTERNAL GRILLE
Has manually driven shutters



AIR DUCT
Plastic air duct



CARTRIDGE
An assembly unit consisting of the fan, regenerator and filters. Generates air stream and provides regeneration and air filtration



SOUND-ABSORBING ROLL
Prevents spread of the outdoor noise in the room



EXTERNAL GRILLE
Prevents ingress of water and foreign objects into the ventilator

● **CERAMIC ENERGY REGENERATOR**

The high-tech ceramic energy accumulator with regeneration efficiency up to 97 % ensures extract air heat recovery for warming of supply air flow. Due to the cellular structure the unique regenerator has a large air contact surface and high heat-conducting and heat-accumulating properties.

The ceramic regenerator is treated with an antibacterial composition which prevents bacteria growth inside of the energy regenerator. The antibacterial properties last for 10 years.

● **AIR FILTERS**

The two integrated air filters with total filtration rate G3 provide supply and extract air filtration. The filters prevent ingress of dust and insects into the supply air and contamination of the ventilator parts. The filters also have antibacterial treatment.

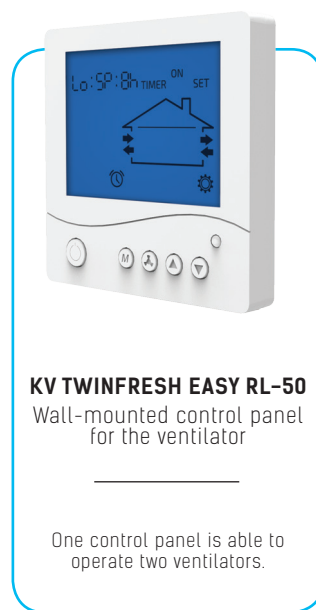
The filter cleaning is done with a vacuum cleaner or water flushing. The antibacterial solution is not removed. F8 filter is available as a specially ordered accessory, but when installed, it reduces the air flow down to 40 m³/h.

● **REVERSIBLE DC-FAN**

The reversible axial fan with a DC motor and power supply voltage of 12 V serves for air supply and exhaust. Due to the applied DC technology the fan is featured with low power consumption. The fan motor has integrated thermal overheating protection and ball bearings for long service life.

CONTROL AND OPERATION MODES

The ventilator is operated with the wall-mounted control panel or the remote control for your convenience.



OPERATION MODES:

- **Ventilation mode.** The ventilator runs in the air extract or air supply mode with a set speed. In case of synchronous operation of two connected ventilators one unit operates in the supply mode and the other one in the extract mode.
- **Regeneration mode.** The ventilator runs in two cycles, 70 seconds each, to provide heat and moisture regeneration.
 - **interval 1.** The warm polluted air is extracted from the room and flows through the ceramic regenerator, which gradually absorbs heat and moisture. In 70 seconds after warming is started the ventilator switches to the air supply mode.
 - **interval 2.** The fresh and cold outdoor air flows through the heat regenerator and absorbs the accumulated moisture and heat so that the supply air flow has the room temperature. In 70 seconds, when the energy regenerator gets cold, the ventilator switches to the air extract mode. The cycle starts from the beginning. If two ventilators are installed, they run in opposite phases. While one ventilator supplies fresh air, the second one extracts air from the room.

FUNCTIONING OF THE VENTILATORS

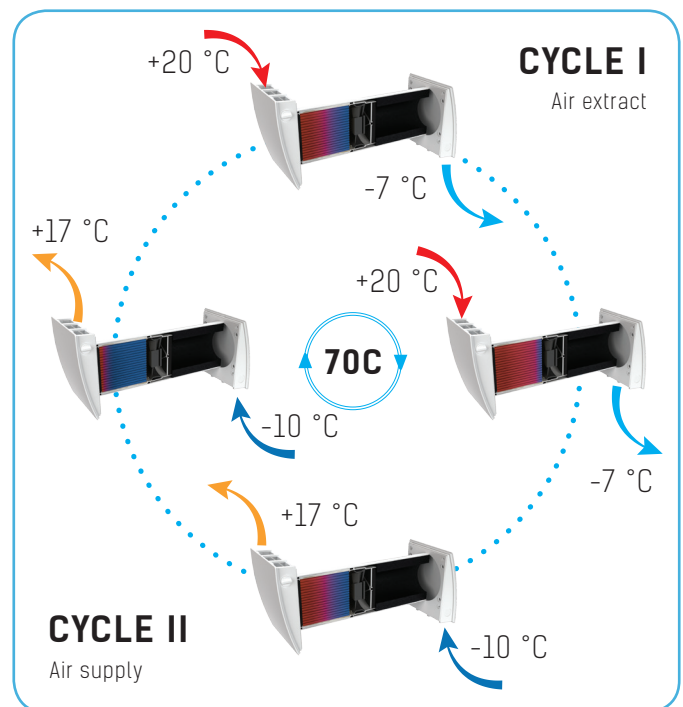
The reversible operation of the ventilator enables energy regeneration and consists of two cycles:

● CYCLE I

The polluted warm air is extracted from the room and while passing the ceramic energy regenerator, it transfers the heat and moisture to it. In 70 seconds, as the energy regenerator gets warmed, the ventilator automatically switches to the supply mode.

● CYCLE II

The fresh, but cold outdoor air flows through the heat regenerator and absorbs the accumulated moisture and heat so that the supply air flow has the room temperature. In 70 seconds, when the energy regenerator gets cold, the ventilator switches to the air extract mode. The cycle starts from the beginning. The changeover between the supply and extract modes takes place each 70 seconds.



USE

The ventilator is designed to ensure continuous mechanical air exchange in houses, offices, hotels, cafes, conference halls and other residential and public premises. The ventilator is equipped with a ceramic regenerator that enables supply of fresh filtered air heated by means of extract air heat regeneration. The ventilator is designed for through-the-wall mounting and is rated for non-stop operation. Transported air must not contain any flammable or explosive mixtures, evaporation of chemicals, sticky substances, fibrous materials, coarse dust, soot and oil particles or environments favourable for the formation of hazardous substances (toxic substances, dust, pathogenic germs).

TECHNICAL DATA

Specific energy consumption (SEC), kWh/(m ² ·a)	Cold		Average		Warm	
	-75.1	A+	-35.6	A	-13.0	E
Type of ventilation unit	Bidirectional					
Type of drive installed	Three-speed					
Type of heat recovery system	Regenerative					
Thermal efficiency of heat recovery, %	77					
Maximum flow rate, m ³ /h	25					
Electric power input, W	5					
Sound power level, dBA	38					
Reference flow rate, m ³ /s	0.004					
Reference pressure difference, Pa	0					
Specific power input (SPI), W/(m ³ /h)	0.180					
Control typology	Clock control					
Maximum internal leakage rates, %	2.7					
Maximum external leakage rates, %	0					
Mixing rate of bidirectional units, %	1					
Airflow sensitivity at +20 Pa and -20 Pa	0.40					
The indoor/outdoor air tightness, m ³ /h	0.5					
Internet address	http://www.ventilation-system.com/					
Annual electricity consumption (AEC), kWh electricity/a	Cold		Average		Warm	
	230		230		230	
Annual heating saved (AHS), kWh primary energy/a	Cold		Average		Warm	
	8089		4135		1870	

Speed	1	2	3
Voltage [V/Hz]	100-240 / 50-60		
Power consumption [W]	1.00	2.10	4.30
Total current consumption [A]	0.017	0.025	0.041
Air flow [m ³ /h] (CFM)	15 (9)	30 (18)	50 (29)
Air flow in regeneration mode [m ³ /h] (CFM)	8 (4)	15 (9)	25 (15)
Power input [W/l/s]	0.48	0.50	0.62
RPM	915	1555	2330
Sound pressure level @ 1 m [dBA]	21	27	29
Sound pressure level @ 3 m [dBA]	12	18	20
Outdoor sound pressure attenuation [dBA] (Sones)	41 (2.5)		
Regeneration efficiency [%]	≤ 92		
Transported air temperature [°C] (Sones)	-15 ... +50 (5... +122)		
Filter	G3 (F8 optionally)		
F8 filter filtration rate PM2.5 [%]	99		
Air flow with F8 filter applied [m ³ /h]	40		

* -30 °C (-22 oF) if S3 TwinFresh cartridge and EH-13 hood are applied

ENERG Y UA
енергия · ενεργεια
IE IA

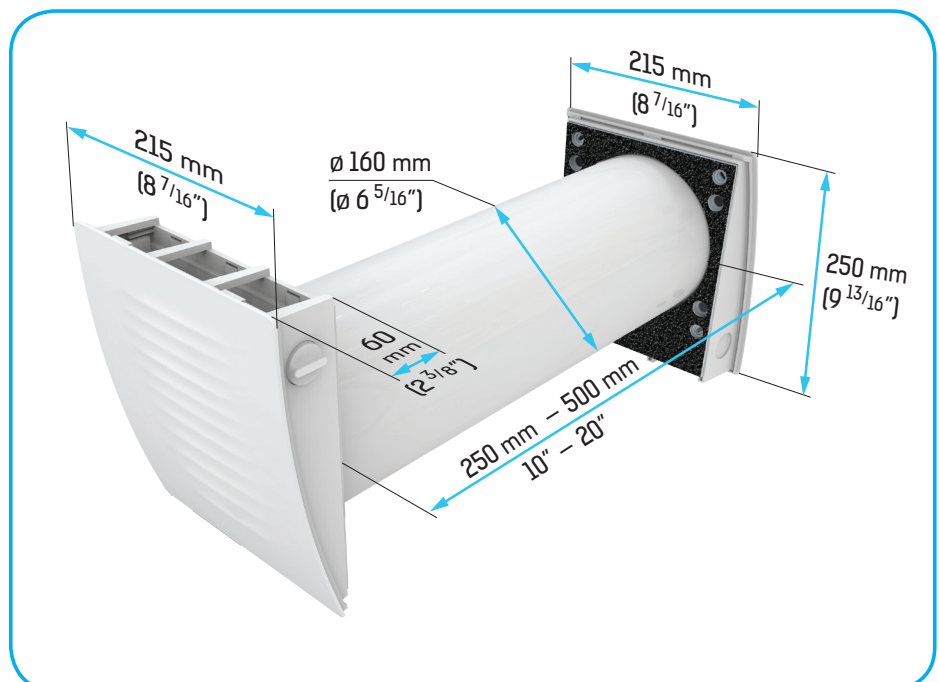
VENTS TwinFresh Easy
RL7-50-17

38
dB

25 m³/h

ENERGIA · ΕΝΕΡΓΙΑ · ΕΝΕΡΓΕΙΑ · ENERGIJA · ENERGY · ENERGIE · ENERGI
2018 1254/2014

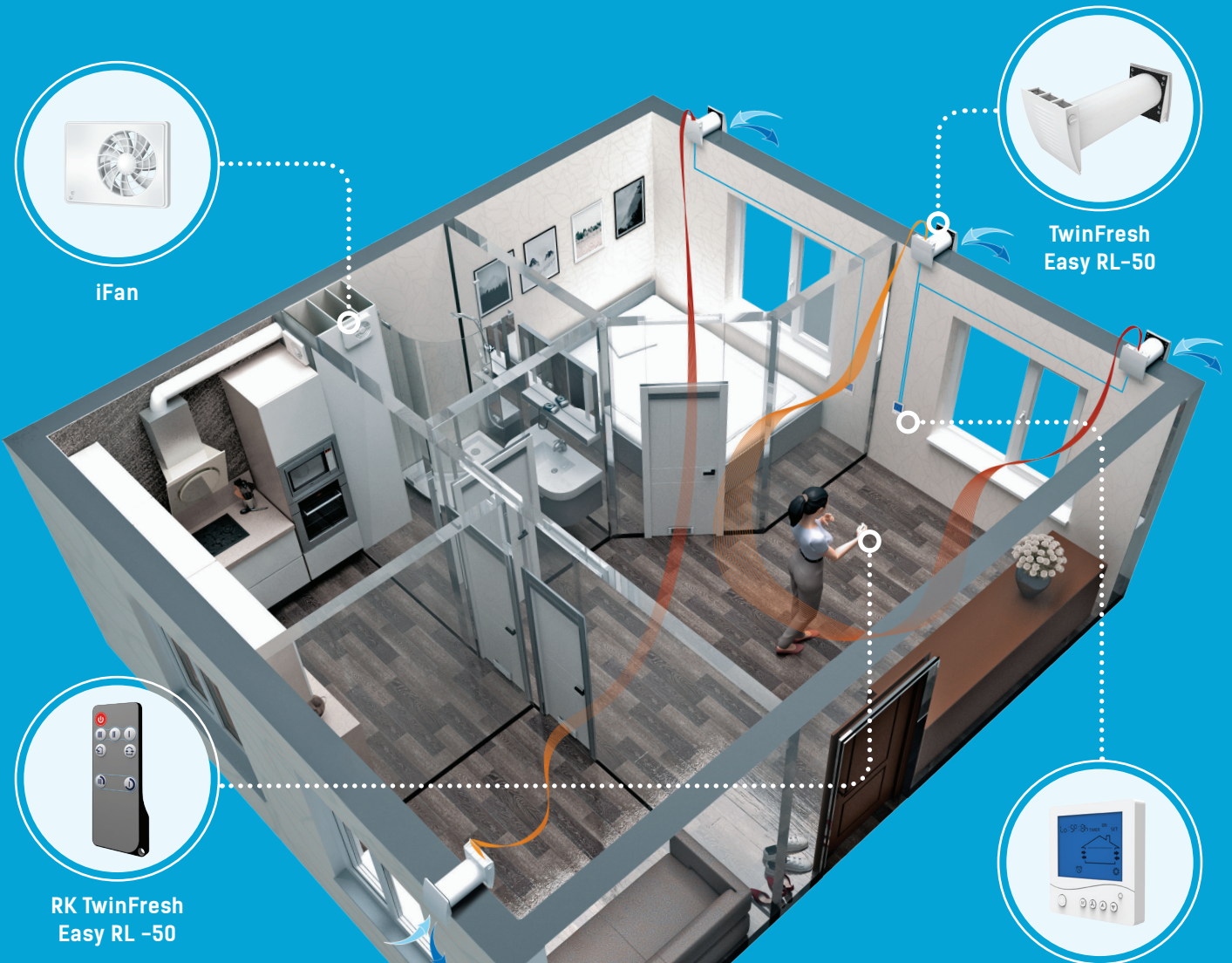
OVERALL DIMENSIONS



VENTILATION ARRANGEMENT EXAMPLE

The ventilation system based on the TwinFresh ventilators provides for one ventilator in each room. For bigger rooms two and more ventilators are recommended. To ensure balanced ventilation, it is advisable to use a paired number of ventilators and connect those into a single network. Some ventilators must be set to operate in the supply mode and the other ventilators must be set to operate in the extract mode. TwinFresh may be used as an individual unit. In this case the ventilation mode must be selected individually for each room.

Air moves between the rooms through the door openings and corridors and this way the required air circulation in the house is arranged. The ventilation system with energy regeneration based on the TwinFresh ventilators significantly reduces heating and air conditioning costs. iFan WiFi fans are recommended for very efficient extract ventilation in the kitchen and bathroom. Polluted air is extracted automatically in case of actuation of the motion or humidity sensors.



INSTALLATION EXAMPLE



Mounting into a wall with a standard thickness using the EH-14 outer grille

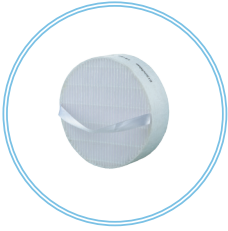


Flush mounting using the angular mounting kit NP



Mounting into a thin wall using the EH-2 outer hood

ACCESSORIES



SF TwinFresh Easy R-50 F8
F8 Filter



SF TwinFresh Easy R-50 G3
G3 filter set (2 pcs.)



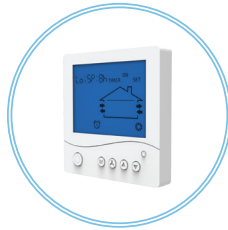
MVM 152 bVsN
Round stainless steel
outer hood



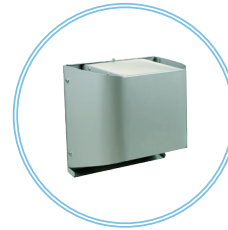
MVMO 150 bV1s An
Round metal grille



RK TwinFresh Easy RL-50
Remote control



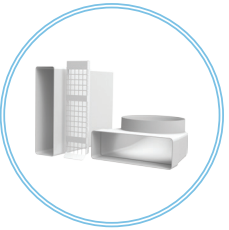
KV TwinFresh Easy RL-50
LCD control panel



EH-2 grey 160
Grey painted stainless steel
outer hood for thin walls



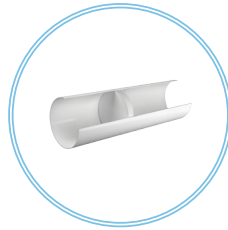
EH-2 chrome 160
Brushed stainless steel outer
hood for thin walls



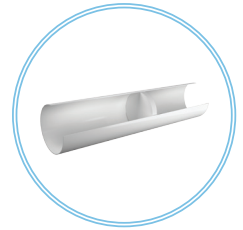
NP white 160
Angular mounting kit



NP chrome 160
Angular mounting kit



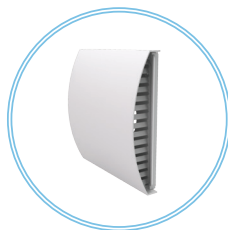
Duct 160-500
Air duct 500 mm



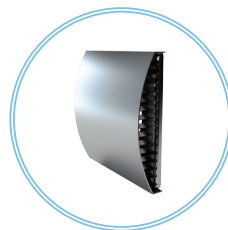
Duct 160-700
Air duct 700 mm



MVVM 162 05
Outer hood for mounting from indoor



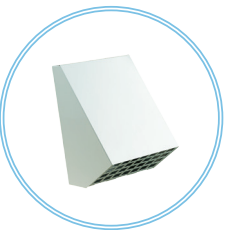
EH-14 white 160
White plastic outer hood



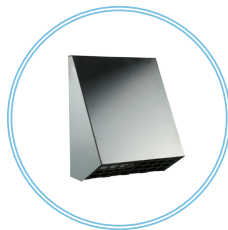
EH-14 chrome 160
Grey plastic outer hood with a
brushed stainless steel cover



S3 TwinFresh
Cartridge for cold climate



EH-13 white 160
White painted aluminium outer
hood for cold climate



EH-13 chrome 160
Brushed stainless steel outer
hood for cold climate



VENTS reserves the rights to modify any of its products' features, designs, components and specifications at any time and without notice to maintain the development and quality of manufactured goods.